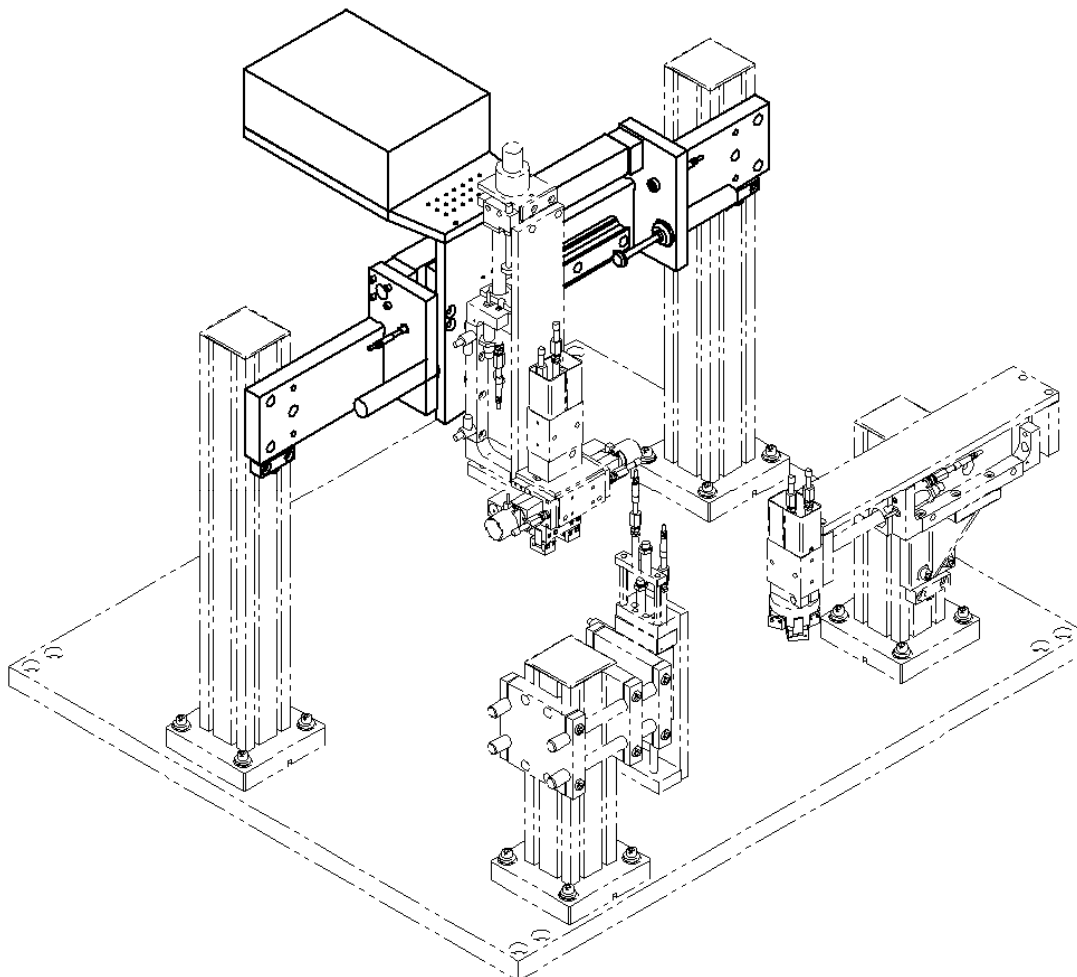
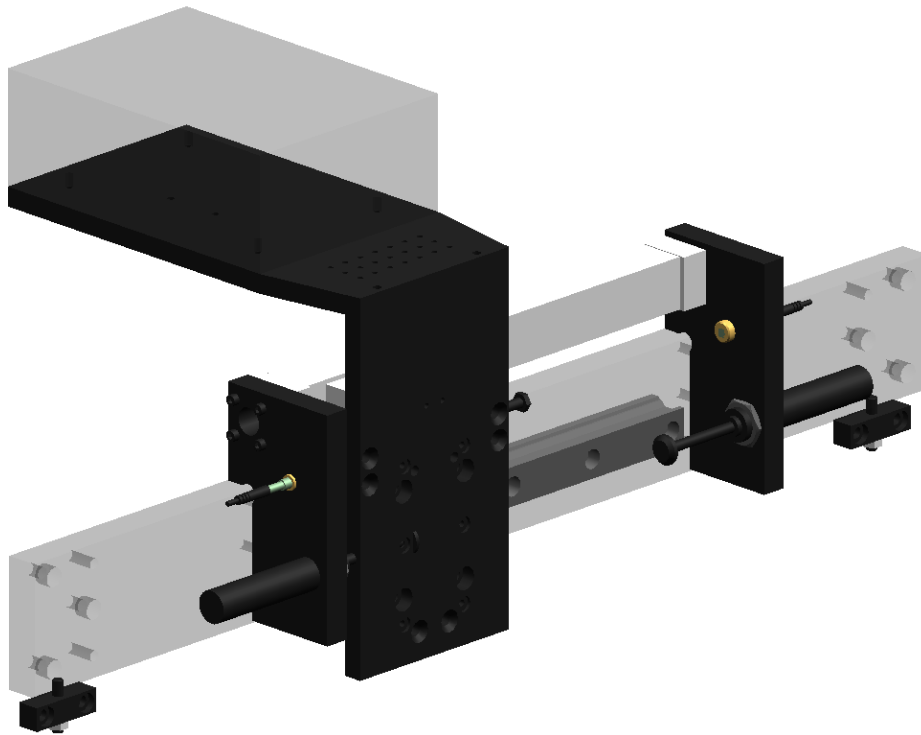


Portals

Overview



Portal LP



The simple configuration of the standard portal allows for a variety of combinations with other Lanco standard handling systems.

The linear modules LL2000 + LL3000 are easily assembled to the portal using Lanco's standard mounting pattern and locating rings.

The proximity switches are integrated into the stop screws which continuously adjust the stroke throughout the stroke range.

End-of-stroke cushioning is provided by self-adjusting hydraulic shock absorbers.

Precision CNC machined parts, hard ground shafts and sealed linear ball bearings guarantee superb repeatability and durability.

For additional stop positions, apply the intermediate stop which ensures repeatability of ± 0.1 mm.

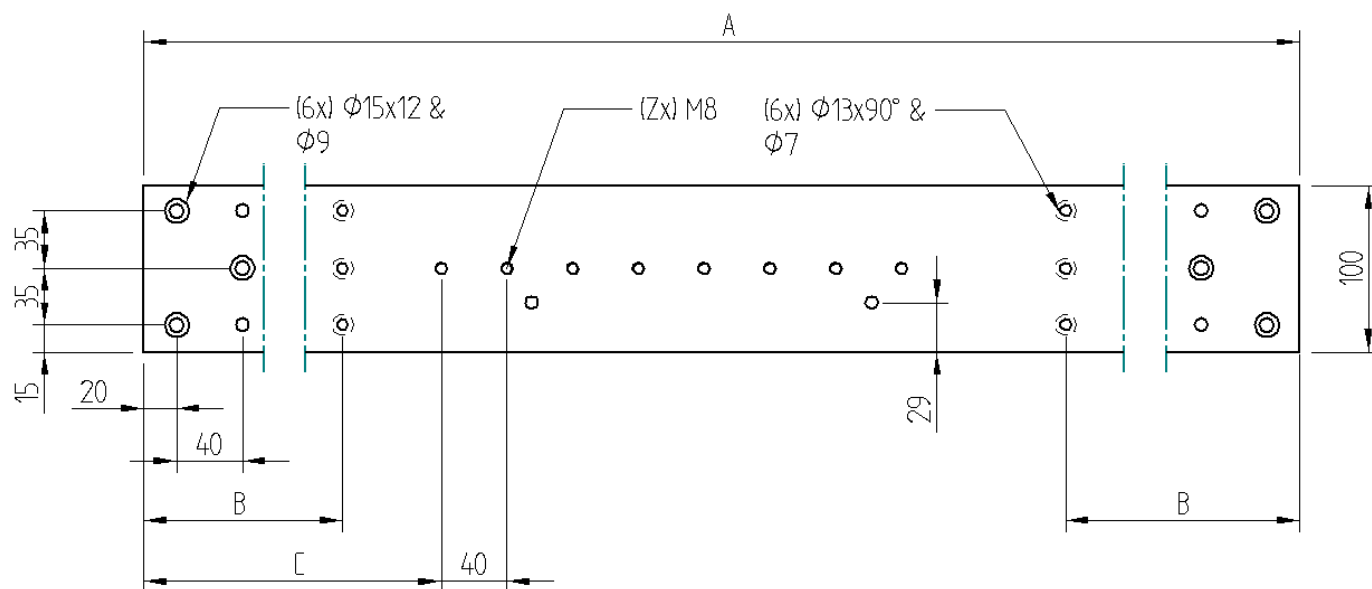
Handling System									
Model	LP 120	LP 200	LP 280	LP 360	LP 440	LP 520	LP 600	LP 680	
Art.-No.	31-0104	31-0105	31-0106	31-0107	31-0108	31-0109	31-0110	31-0111	
Stroke (S)	[mm]	120	200	280	360	440	520	600	680
	[in.]	4.7	7.9	11.0	14.2	17.3	20.5	23.6	26.8
Stroke Adjustment	[mm]	48 ... 120	128 ... 200	208 ... 280	288 ... 360	368 ... 440	448 ... 520	528 ... 600	608 ... 680
	[in.]	1.9 ... 4.7	5.0 ... 7.9	8.2 ... 11.0	11.3 ... 14.2	14.5 ... 17.3	17.6 ... 20.5	20.8 ... 23.6	23.9 ... 26.8
Weight		34.3 kg	34.8 kg	35.3 kg	35.8 kg	36.3 kg	36.8 kg	37.3 kg	37.8 kg
		75.6 lbs	76.7 lbs	77.8 lbs	78.9 lbs	80.0 lbs	81.1 lbs	82.2 lbs	83.3 lbs
Maximum Speed	1000 mm/s (39 in/sec)								
Maximum Load	15.0 kg (33.1 lbs)								
Force @ 6 bar (90 psig)	250 N (57.4 lbf)								
Repeatability	± 0.01 mm (.0004 in.)								
Ports (P)	G $\frac{1}{8}$ "								
Operating Medium	Clean, Dry Compressed Air – 120 psig max								
Mounting Position	Horizontal								
Color	Black								

Fastening Plate

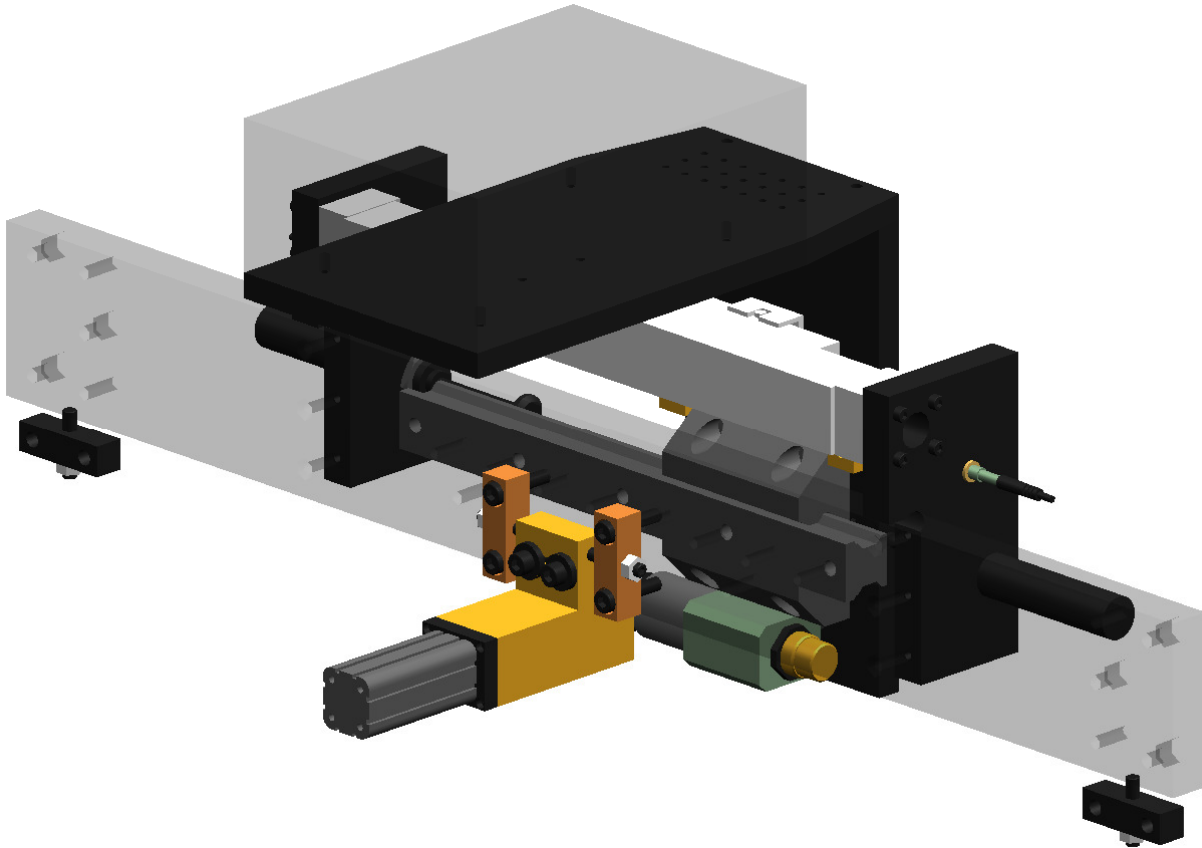
There are several standard fastening plates available for the set-up of the portals.
The fastening plate is used for the support of the portal system.
Dimensions A ... C have several variations to suit individual application needs.

Handling System									
Model		LP BP 120	LP BP 200	LP BP 280	LP BP 360	LP BP 440	LP BP 520	LP BP 600	LP BP 680
Art.-No.		31-2331	31-2332	31-2333	31-2334	31-2335	31-2336	31-2337	31-2338
Dimension A	[mm]	900	900	900	900	900	980	1060	1140
	[in.]	35.4	35.4	35.4	35.4	35.4	38.6	41.7	44.9
Dimension B	[mm]	270	230	190	150	110	110	110	110
	[in.]	10.6	9.1	7.5	5.9	4.3	4.3	4.3	4.3
Dimension C	[mm]	330	290	250	210	170	170	170	170
	[in.]	13.0	11.4	9.8	8.3	6.7	6.7	6.7 </td <td>6.7</td>	6.7
Number of Locating Holes (Z)		7	9	11	13	15	17	19	21

Dimensions

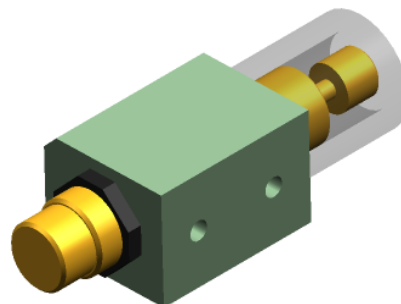
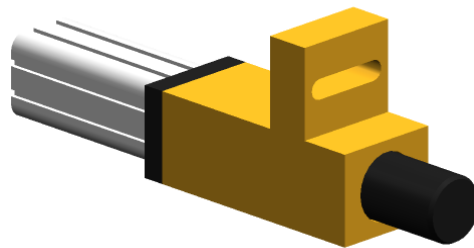


Intermediate Stop



The intermediate stop allows the possibility of a second stop on the back position.
 The adjustable intermediate position will be verified by the proximity switch on the intermediate cylinder.
 The shock absorber is included in the stop.

Handling System	
Model	LP ZA
Art.-No.	31-1420
Repeatability	± 0.1 mm
Ports (P)	M5
Operating Medium	Clean, Dry Compressed Air – 120 psig max



Dimensions

