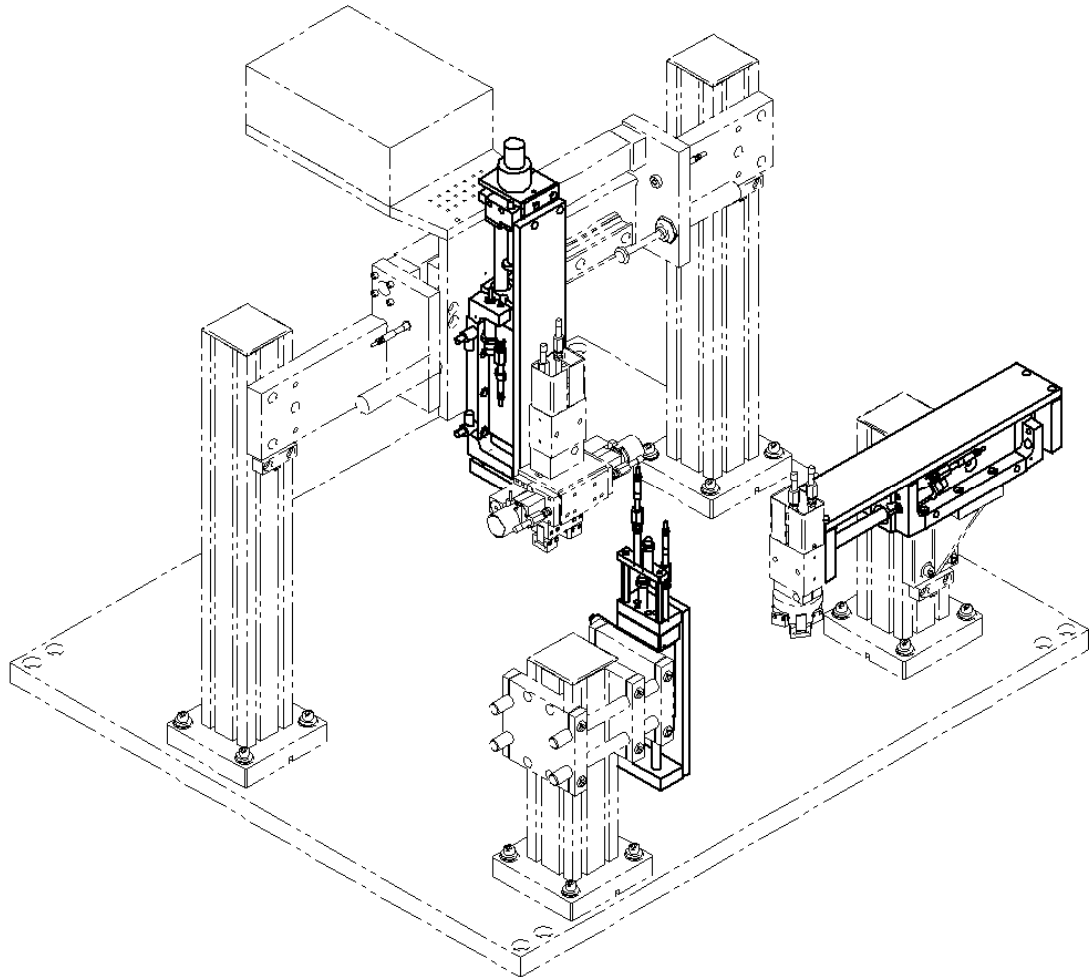


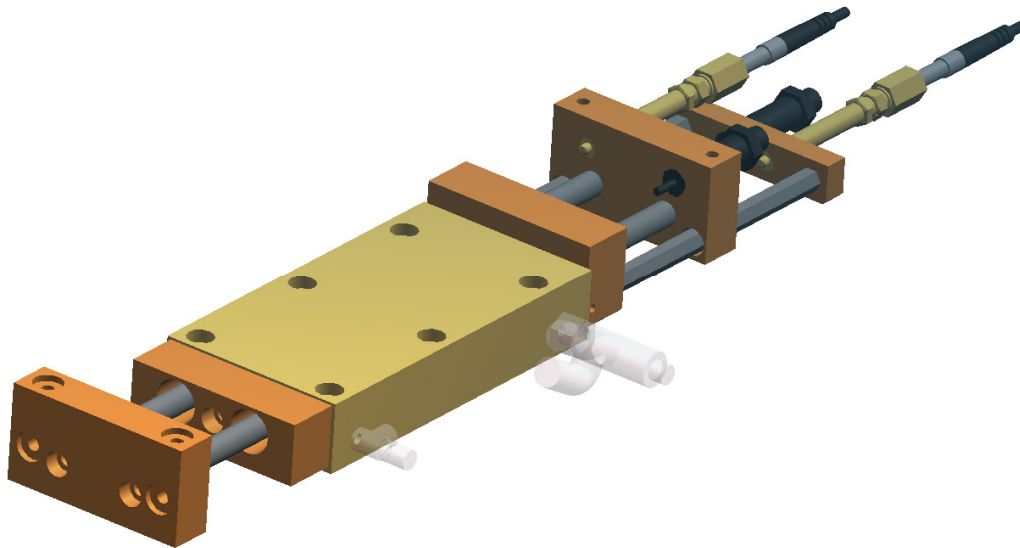
Linear Modules

Overview





Linear Module LL 2000



The linear module LL 2000 handling system offers an unmatched degree of flexibility for your material handling applications.

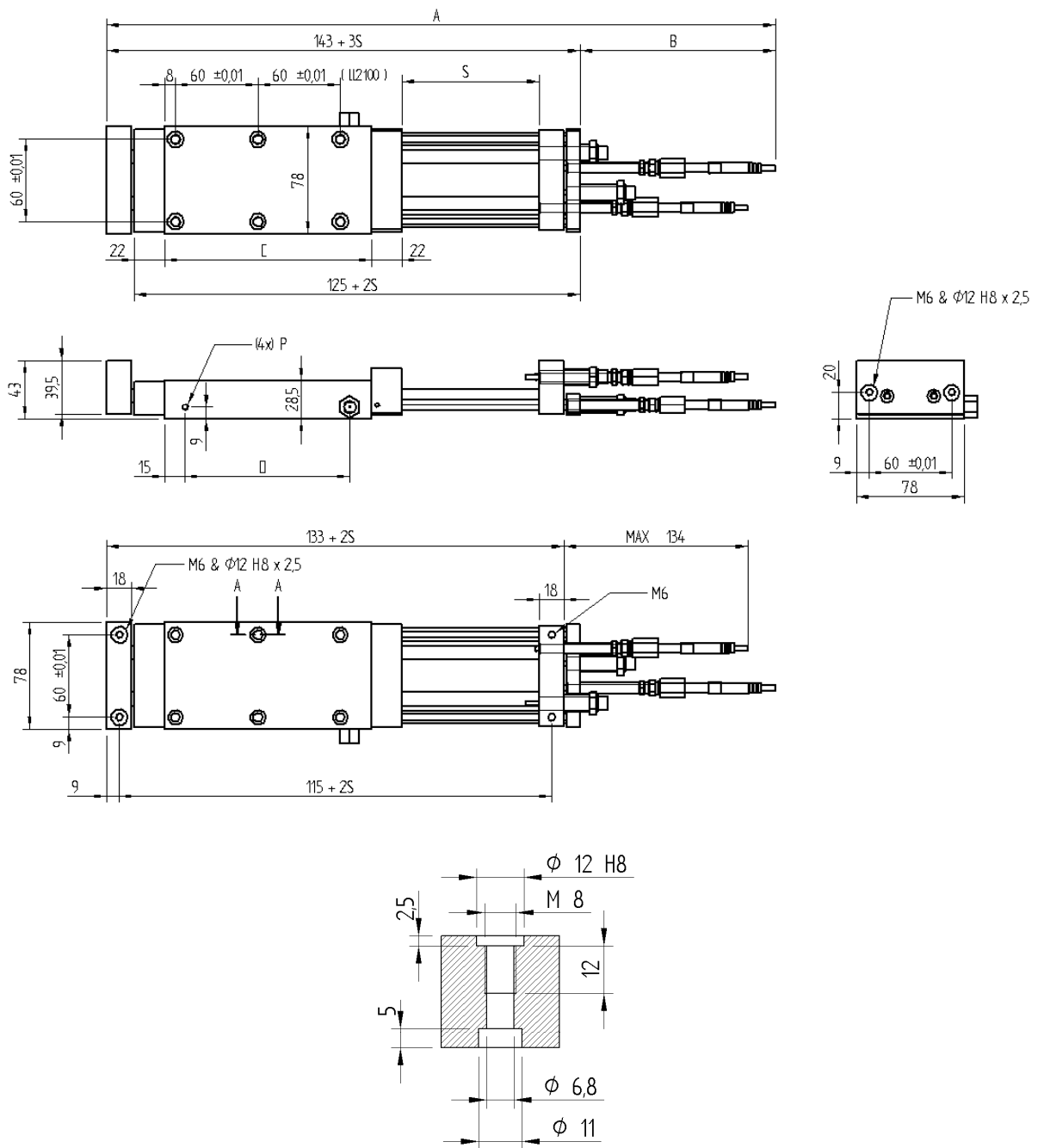
Three stroke ranges up to 100 mm are available. Using Lanco's standard 60 mm (2.36 in) mounting pattern and unique locating rings, the LL 2000 may be easily and quickly combined with other Lanco handling systems for a wide range of parts handling applications.

Precision CNC machined parts, hard ground shafts and sealed linear ball bearings all contribute to the LL 2000's superb repeatability and durability.

End-of-stroke cushioning is provided by self-adjusting hydraulic shock absorbers. Set-up and adjustments are made easy through the use of Lanco's unique stop bolt with proximity switch: simply adjust the stop bolt and the switch requires no further adjustment.

Handling System			
Model	LL 2025	LL 2060	LL 2100
Art.-No.	31-0022	31-0023	31-0024
Stroke (S)	25 mm (0.98 in.)	60 mm (2.36 in.)	100 mm (3.94 in.)
Stroke Adjustment	0 ... 25 mm (0 – 0.98 in.)	10 ... 60 mm (0.39 – 2.36 in.)	50 ... 100 mm (1.97 – 3.94 in.)
Weight	1.3 kg (2.9 lb)	1.6 kg (3.5 lb)	1.9 kg (4.2 lb)
Maximum Speed	800 mm/s (32 in/sec)		
Maximum Load	6.8 kg (15 lbs)		
Force @ 6 bar (90 psig)	148 N (34 lbf)		
Repeatability	± 0.01 mm (.0004 in.)		
Ports (P)	M5		
Operating Medium	Clean, Dry Compressed Air – 120 psig max		
Mounting Positions	Unlimited		
Color	Gold/Bronze Anodize		

Dimensions



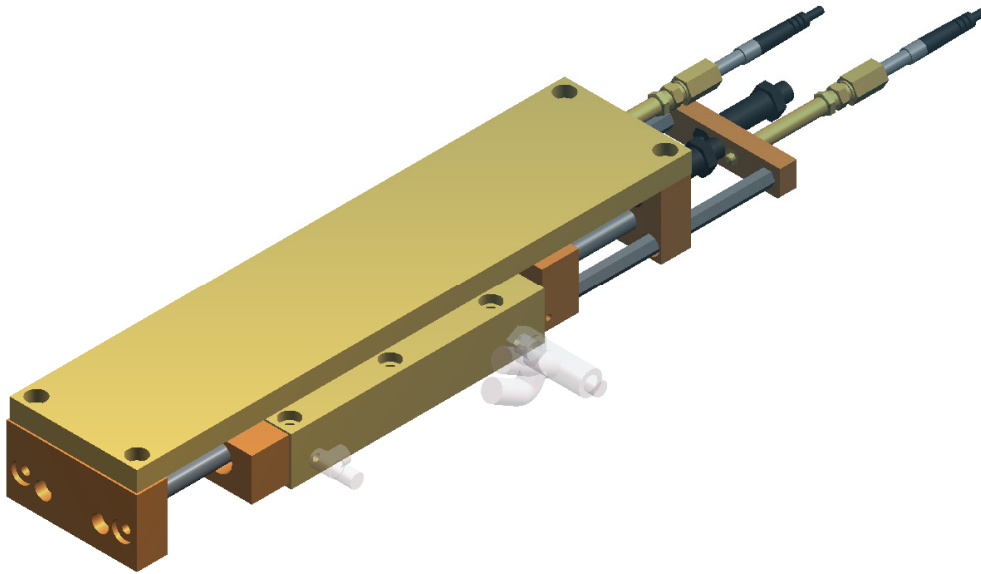
SECTION A-A

	LL 2025	LL 2060	LL 2100
Dimension A	330	435	585
Dimension B	112	112	142
Dimension C	76	111	151
Dimension D	44	79	120
Number of Locating Holes	4	4	6



Linear Module LL 2000 A

With Mounting Plate



The linear module LL 2000 handling system offers an unmatched degree of flexibility for your material handling applications.

Three stroke ranges up to 100 mm are available. Using Lanco's standard 60 mm (2.36 in) mounting pattern and unique locating rings, the LL 2000 may be easily and quickly combined with other Lanco handling systems for a wide range of parts handling applications.

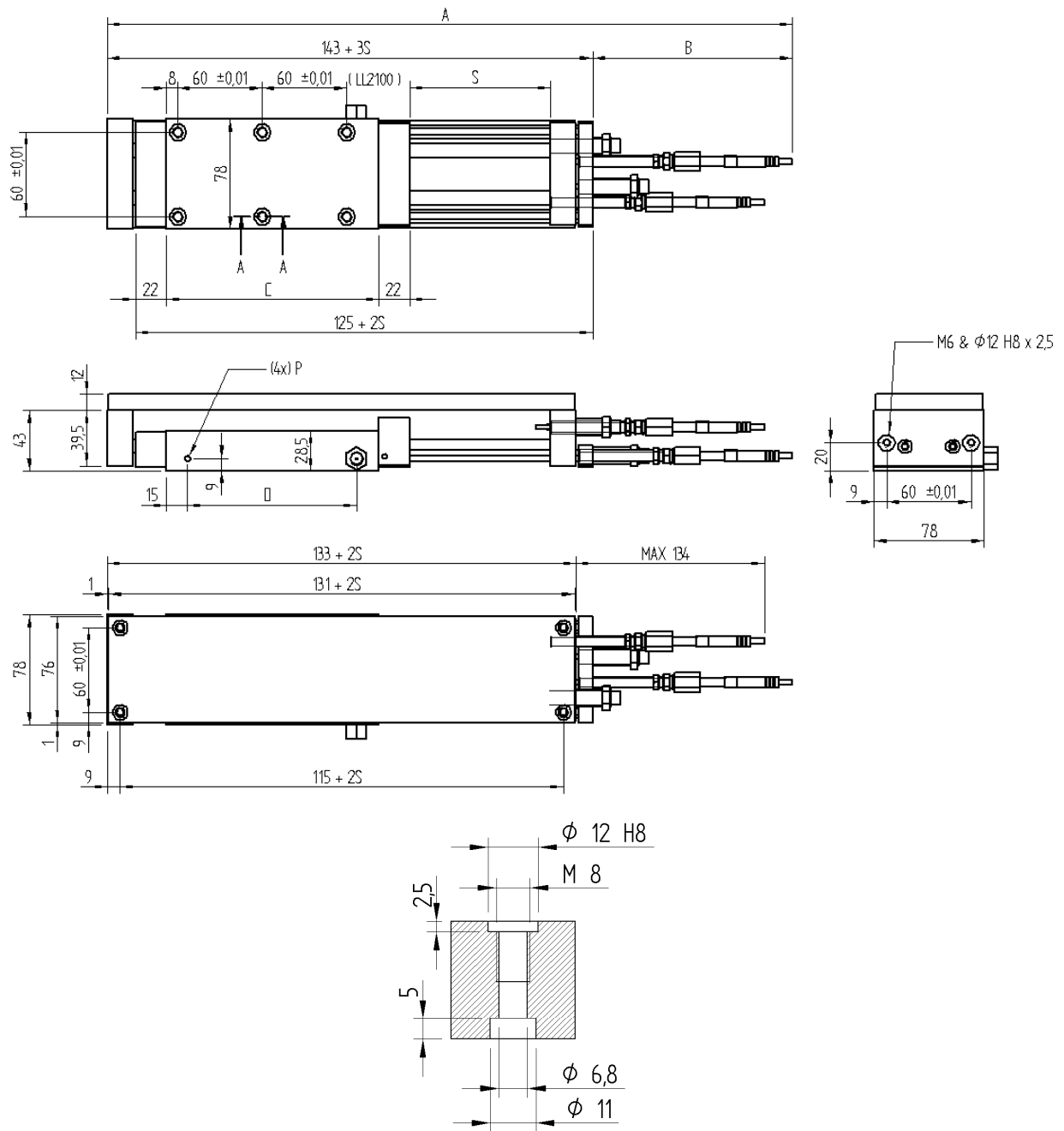
By adding the mounting plate option, system stiffness is enhanced while broadening mounting alternatives.

Precision CNC machined parts, hard ground shafts and sealed linear ball bearings all contribute to the LL 2000's superb repeatability and durability.

End-of-stroke cushioning is provided by self-adjusting hydraulic shock absorbers. Set-up and adjustments are made easy through the use of Lanco's unique stop bolt with proximity switch: simply adjust the stop bolt and the switch requires no further adjustment.

Handling System			
Model	LL 2025 A	LL 2060 A	LL 2100 A
Art.-No.	31-0026	31-0027	31-0028
Stroke (S)	25 mm (0.98 in.)	60 mm (2.36 in.)	100 mm (3.94 in.)
Stroke Adjustment	0 ... 25 mm (0 – 0.98 in.)	10 ... 60 mm (0.39 – 2.36 in.)	50 ... 100 mm (1.97 – 3.94 in.)
Weight	1.6 kg (3.5 lb)	1.9 kg (4.2 lb)	2.2 kg (4.9 lb)
Maximum Speed	800 mm/s (32 in/sec)		
Maximum Load	6.8 kg (15 lbs)		
Force @ 6 bar (90 psig)	148 N (34 lbf)		
Repeatability	± 0.01 mm (.0004 in.)		
Ports (P)	M5		
Operating Medium	Clean, Dry Compressed Air – 120 psig max		
Mounting Positions	Unlimited		
Color	Gold/Bronze Anodize		

Dimensions



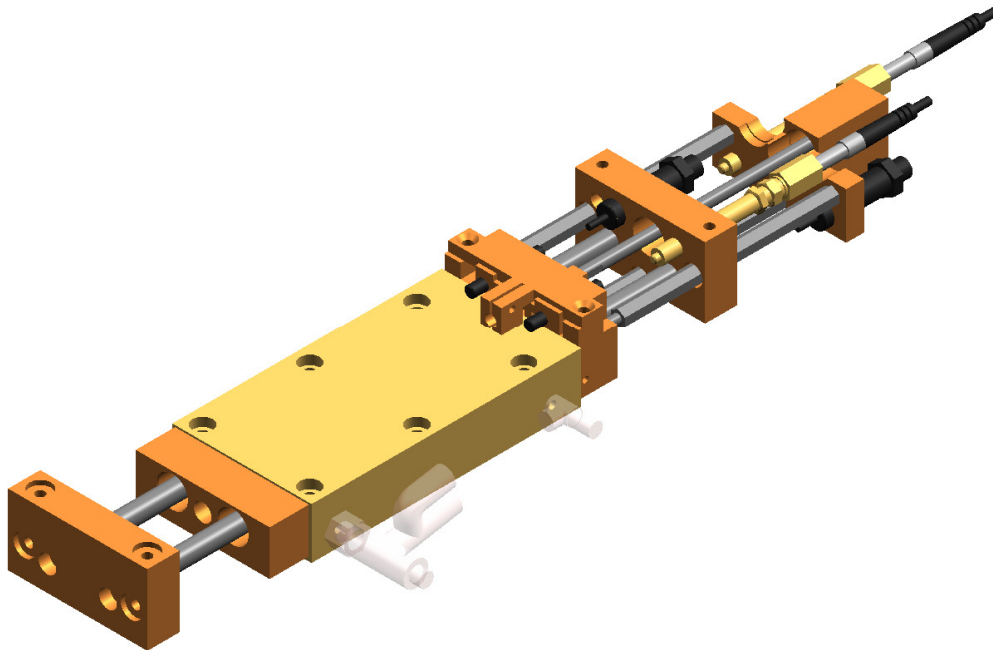
SECTION A-A

	LL 2025 A	LL 2060 A	LL 2100 A
Dimension A	330	435	585
Dimension B	112	112	142
Dimension C	76	111	151
Dimension D	44	79	120
Number of Locating Holes	4	4	6



Linear Module LL 2000 Z

With Intermediate Stop



The linear module LL 2000 handling system offers an unmatched degree of flexibility for your material handling applications.

Three stroke ranges up to 100 mm are available. Using Lanco's standard 60 mm (2.36 in) mounting pattern and unique locating rings, the LL 2000 may be easily and quickly combined with other Lanco handling systems for a wide range of parts handling applications.

Further, the LL 2000 may be ordered with the intermediate stop option to provide an additional back position.

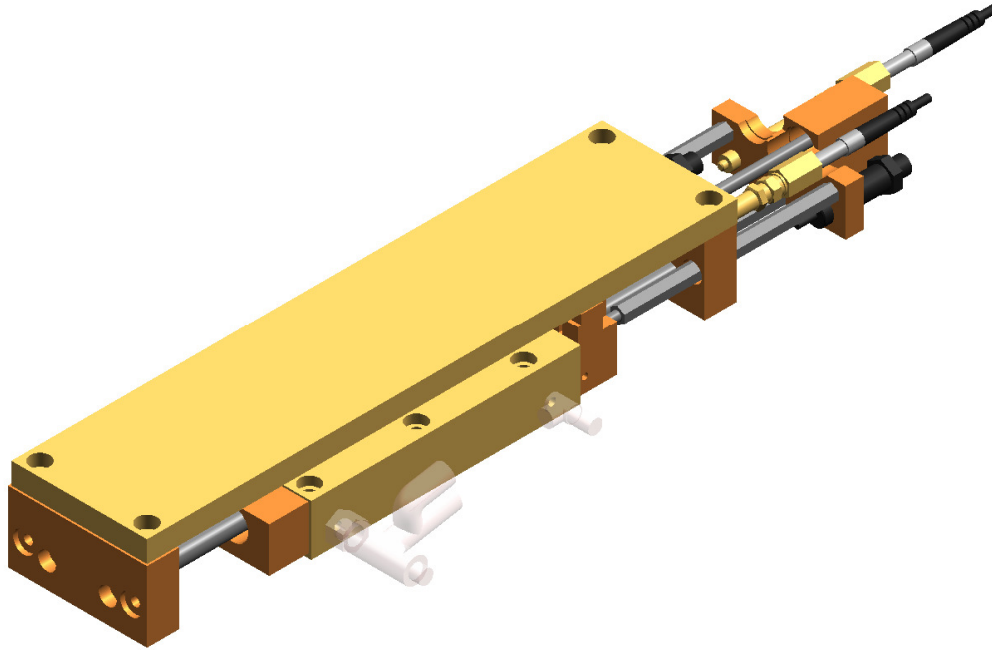
Precision CNC machined parts, hard ground shafts and sealed linear ball bearings all contribute to the LL 2000's superb repeatability and durability.

End-of-stroke cushioning is provided by self-adjusting hydraulic shock absorbers. Set-up and adjustments are made easy through the use of Lanco's unique stop bolt with proximity switch: simply adjust the stop bolt and the switch requires no further adjustment.

Handling System			
Model	LL 2025 Z	LL 2060 Z	LL 2100 Z
Art.-No.	31-0030	31-0031	31-0032
Stroke (S)	25 mm (0.98 in.)	60 mm (2.36 in.)	100 mm (3.94 in.)
Stroke Adjustment	0 ... 25 mm (0 – 0.98 in.)	10 ... 60 mm (0.39 – 2.36 in.)	50 ... 100 mm (1.97 – 3.94 in.)
Weight	1.7 kg (3.7 lb)	2.2 kg (4.9 lb)	2.7 kg (5.9 lb)
Maximum Speed	800 mm/s (32 in/sec)		
Maximum Load	6.8 kg (15 lbs)		
Force @ 6 bar (90 psig)	148 N (34 lbf)		
Repeatability	± 0.01 mm (.0004 in.)		
Ports (P)	M5		
Operating Medium	Clean, Dry Compressed Air – 120 psig max		
Mounting Positions	Unlimited		
Color	Gold/Bronze Anodize		

Linear Module LL 2000 AZ

With Intermediate Stop and Mounting Plate



The linear module LL 2000 handling system offers an unmatched degree of flexibility for your material handling applications.

Three stroke ranges up to 100 mm are available. Using Lanco's standard 60 mm (2.36 in) mounting pattern and unique locating rings, the LL 2000 may be easily and quickly combined with other Lanco handling systems for a wide range of parts handling applications.

By adding the mounting plate option, system stiffness is enhanced while broadening mounting alternatives.

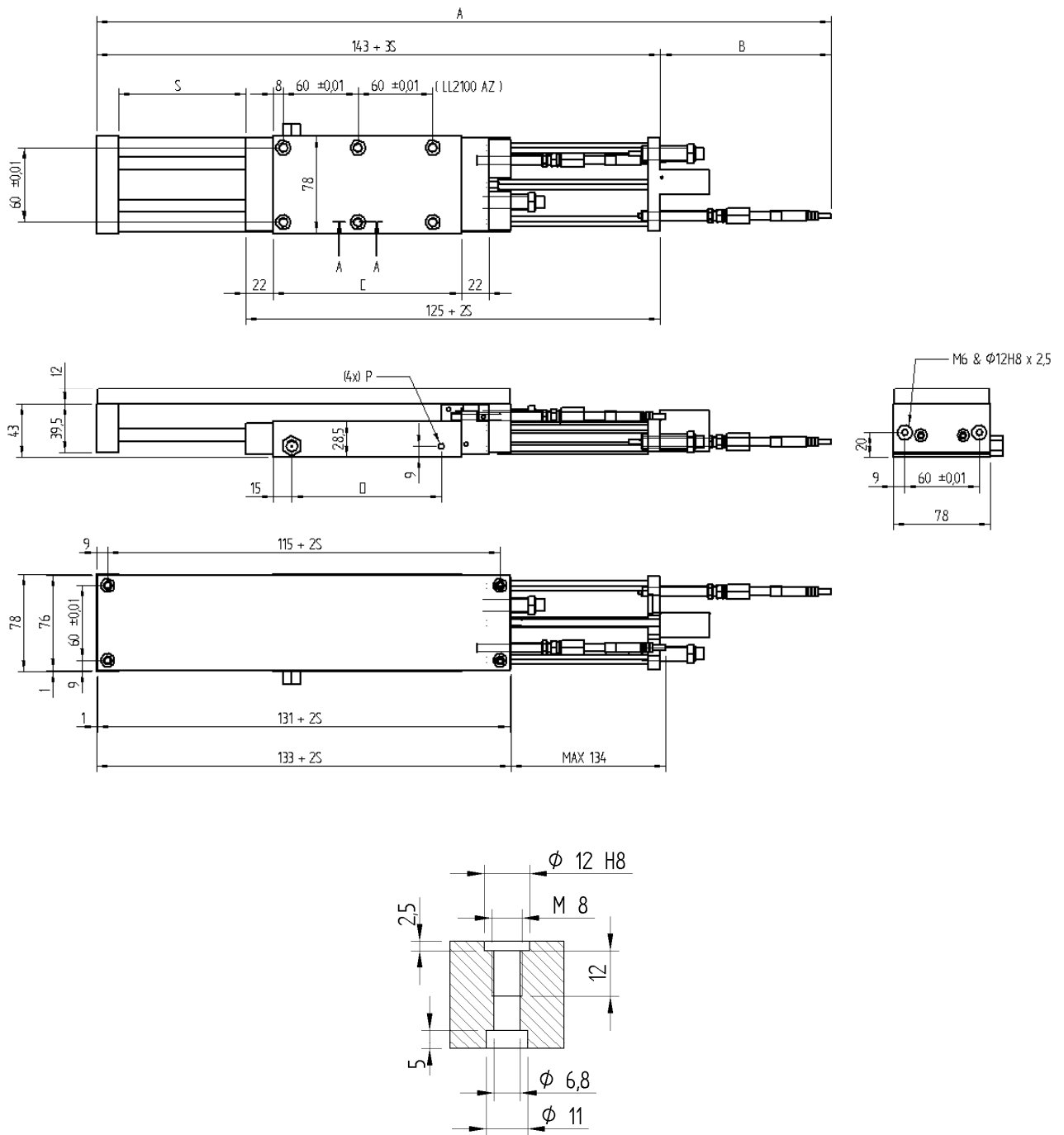
Further, the LL 2000 may be ordered with the intermediate stop option to provide an additional back position.

Precision CNC machined parts, hard ground shafts and sealed linear ball bearings all contribute to the LL 2000's superb repeatability and durability.

End-of-stroke cushioning is provided by self-adjusting hydraulic shock absorbers. Set-up and adjustments are made easy through the use of Lanco's unique stop bolt with proximity switch: simply adjust the stop bolt and the switch requires no further adjustment.

Handling System			
Model	LL 2025 AZ	LL 2060 AZ	LL 2100 AZ
Art.-No.	31-0034	31-0035	31-0036
Stroke (S)	25 mm (0.98 in.)	60 mm (2.36 in.)	100 mm (3.94 in.)
Stroke Adjustment	0 ... 25 mm (0 – 0.98 in.)	10 ... 60 mm (0.39 – 2.36 in.)	50 ... 100 mm (1.97 – 3.94 in.)
Weight	2.0 kg (4.4 lb)	2.5 kg (5.5 lb)	3.0 kg (6.6 lb)
Maximum Speed	800 mm/s (32 in/sec)		
Maximum Load	6.8 kg (15 lbs)		
Force @ 6 bar (90 psig)	148 N (34 lbf)		
Repeatability	± 0.01 mm (.0004 in.)		
Ports (P)	M5		
Operating Medium	Clean, Dry Compressed Air – 120 psig max		
Mounting Positions	Unlimited		
Color	Gold/Bronze Anodize		

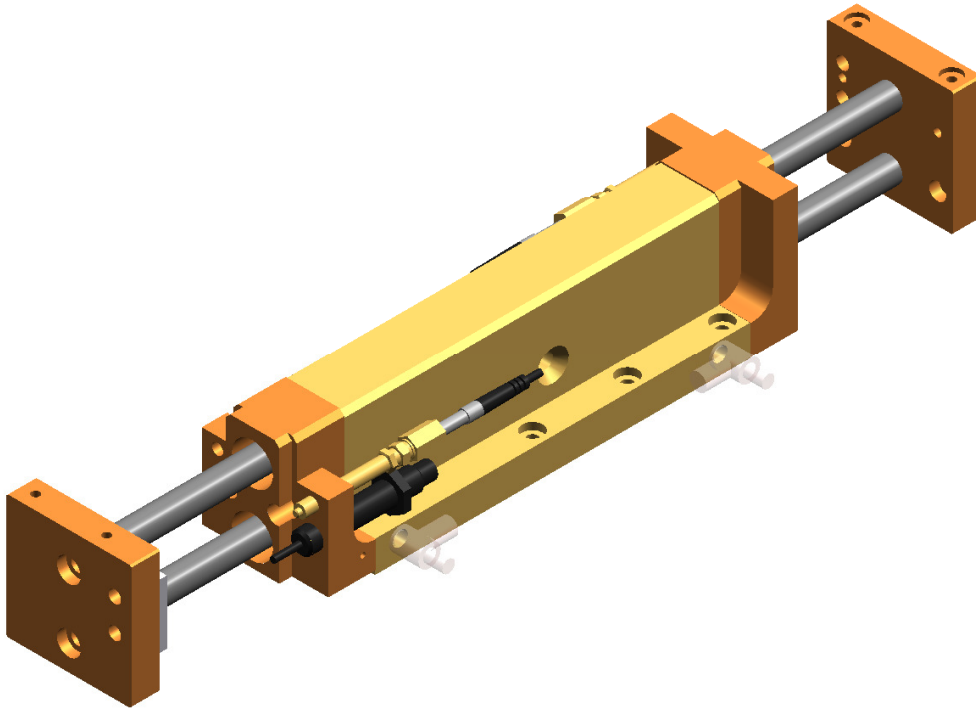
Dimensions



SECTION A-A

	LL 2025 AZ	LL 2060 AZ	LL 2100 AZ
Dimension A	330	435	585
Dimension B	112	112	142
Dimension C	76	111	151
Dimension D	44	79	120
Number of Locating Holes	4	4	6

Linear Module LL 3000



To meet your material handling needs, the linear module LL 3000 handling system offers you flexibility and compatibility with the entire range of Lanco handling system modules.

Three stroke ranges of 60 mm (2.36 in), 120 mm (4.72 in), and 180 mm (7.09 in) are available. As with all Lanco handling system components, a standard 60 mm (2.36 in) mounting bolt pattern is used in conjunction with Lanco's unique locating ring so that modules may be mixed and matched to meet the needs of your particular application.

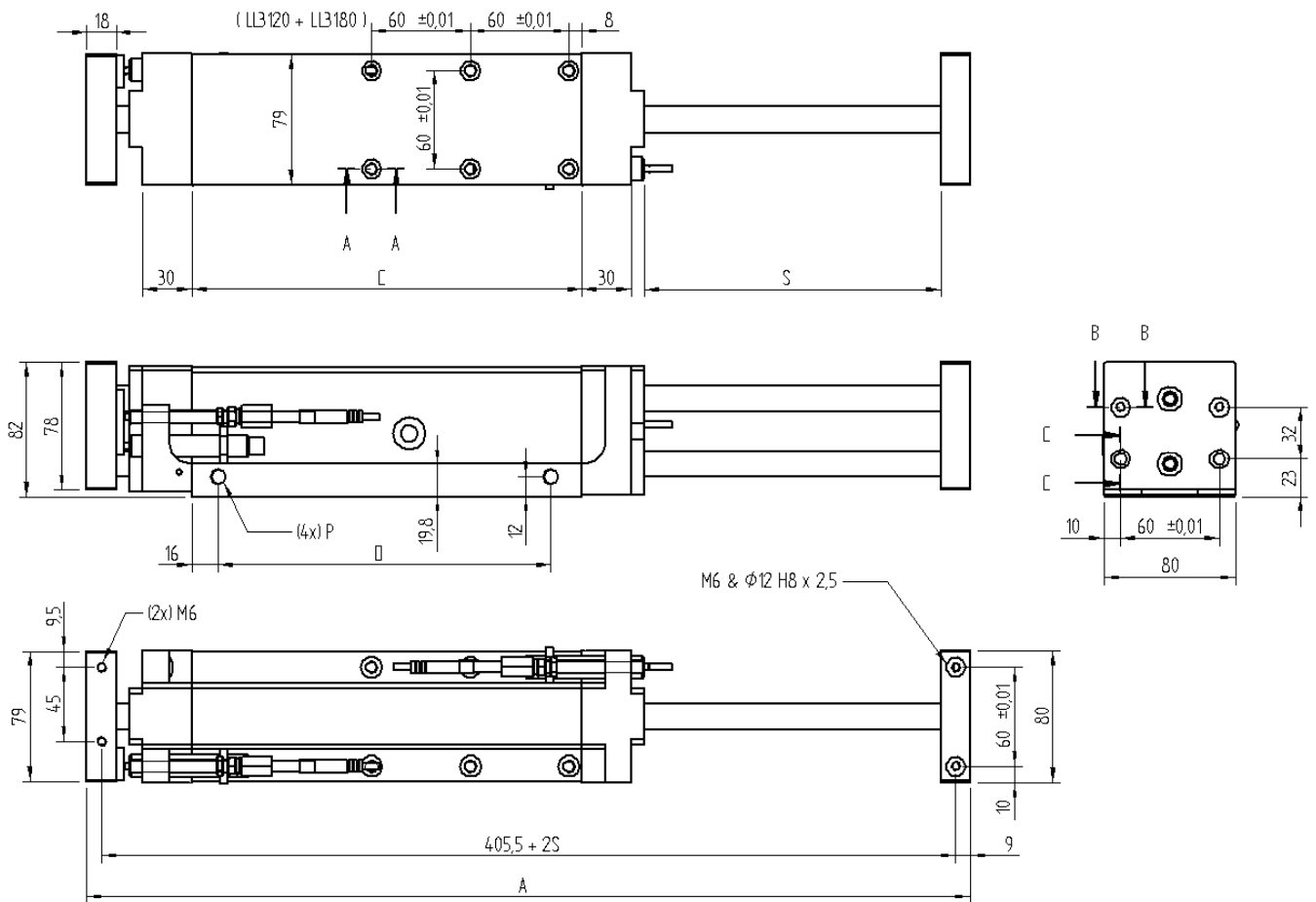
Sealed linear ball bearings and hard ground shafts assure you smooth, frictionless motion. Precision CNC machined parts manufactured to exacting tolerances insure highly repeatable action year after year.

Standard hydraulic shock absorbers effectively cushion the end-of-stroke impact so that wear and tear is minimized.

Lanco also makes set-up a snap by providing stop bolts with integral proximity switches: adjusting the stop position automatically repositions the switch.

Handling System			
Model	LL 3060	LL 3120	LL 3180
Art.-No.	31-0006	31-0007	31-0008
Stroke (S)	60 mm (2.36 in.)	120 mm (4.72 in.)	180 mm (7.09 in.)
Stroke Adjustment	0 ... 60 mm (0 – 2.36 in.)	40 ... 120 mm (1.58 – 4.72 in.)	100 ... 180 mm (3.94 – 7.09 in.)
Weight	3.75 kg (8.3 lb)	4.55 kg (10.0 lb)	5.4 kg (11.9 lb)
Maximum Speed	800 mm/s (32 in/sec)		
Maximum Load	10 kg (22 lbs)		
Force @ 6 bar (90 psig)	350 N (80 lbf)		
Repeatability	± 0.01 mm (.0004 in.)		
Ports (P)	1/8" NPT		
Operating Medium	Clean, Dry Compressed Air – 120 psig max		
Mounting Positions	Unlimited		
Color	Gold/Bronze Anodize		

Dimensions



SECTION A-A

SECTION B-B

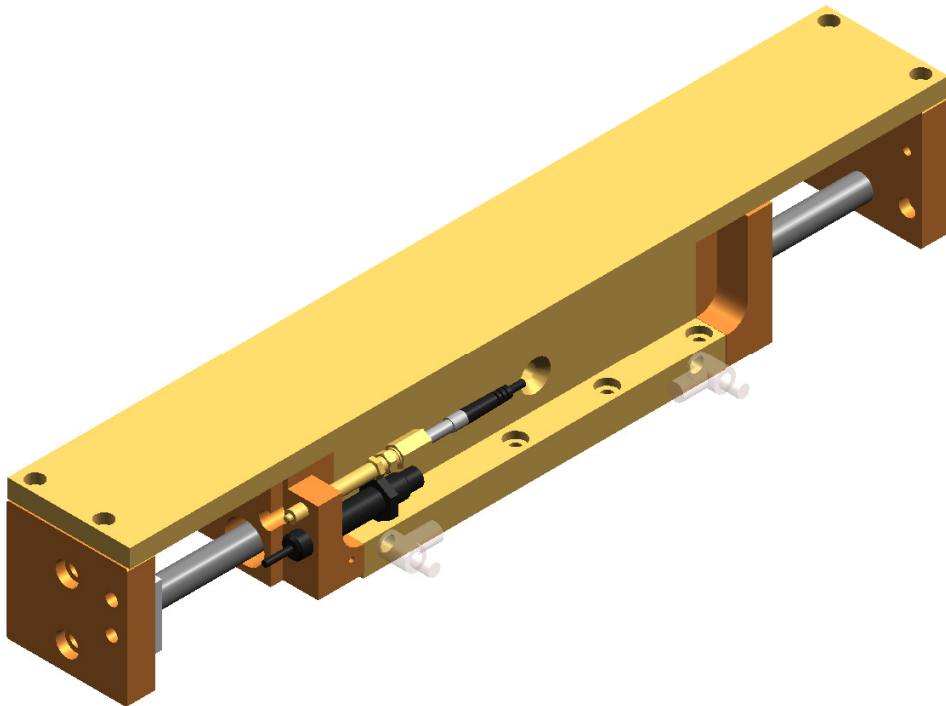
SECTION C-C

	LL 3060	LL 3120	LL 3180
Dimension A	297	417	537
Dimension C	117	177	237
Dimension D	82	142	202
Number of Locating Holes	4	6	6



Linear Module LL 3000 A

With Mounting Plate



To meet your material handling needs, the linear module LL 3000 handling system offers you flexibility and compatibility with the entire range of Lanco handling system modules.

Three stroke ranges of 60 mm (2.36 in), 120 mm (4.72 in), and 180 mm (7.09 in) are available. As with all Lanco handling system components, a standard 60 mm (2.36 in) mounting bolt pattern is used in conjunction with Lanco's unique locating ring so that modules may be mixed and matched to meet the needs of your particular application.

By adding the mounting plate option, system stiffness is enhanced while broadening mounting alternatives.

Sealed linear ball bearings and hard ground shafts assure you smooth, frictionless motion. Precision CNC machined parts manufactured to exacting tolerances insure highly repeatable action year after year.

Standard hydraulic shock absorbers effectively cushion the end-of-stroke impact so that wear and tear is minimized.

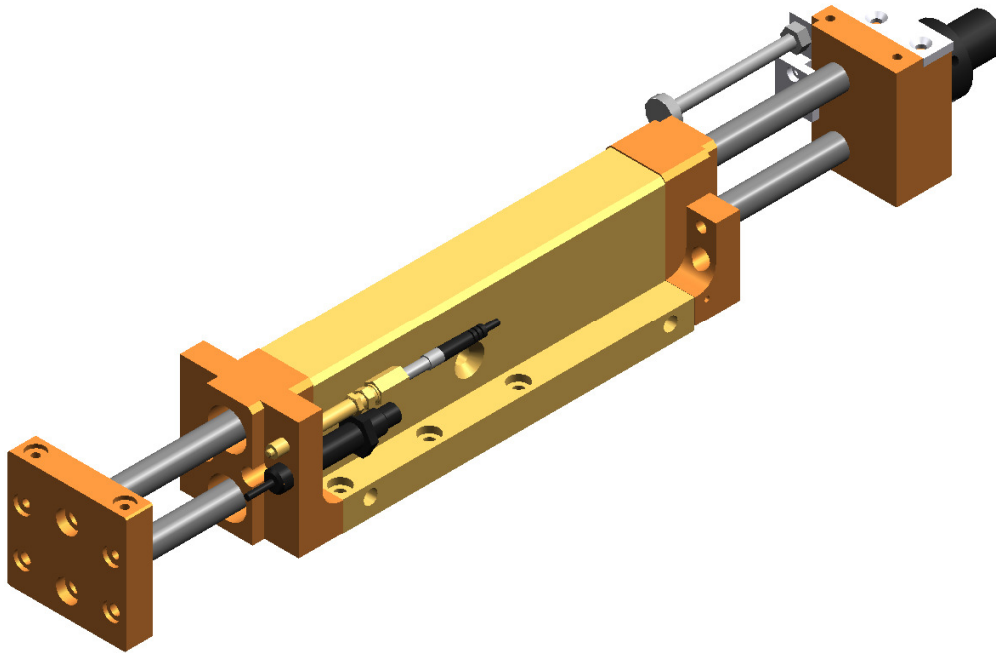
Lanco also makes set-up a snap by providing stop bolts with integral proximity switches: adjusting the stop position automatically repositions the switch.

Handling System			
Model	LL 3060 A	LL 3120 A	LL 3180 A
Art.-No.	31-0010	31-0011	31-0012
Stroke (S)	60 mm (2.36 in.)	120 mm (4.72 in.)	180 mm (7.09 in.)
Stroke Adjustment	0 ... 60 mm (0 – 2.36 in.)	40 ... 120 mm (1.58 – 4.72 in.)	100 ... 180 mm (3.94 – 7.09 in.)
Weight	4.8 kg (10.6 lb)	5.6 kg (12.3 lb)	6.8 kg (15.0 lb)
Maximum Speed	800 mm/s (32 in/sec)		
Maximum Load	10 kg (22 lbs)		
Force @ 6 bar (90 psig)	350 N (80 lbf)		
Repeatability	± 0.01 mm (.0004 in.)		
Ports (P)	1/8" NPT		
Operating Medium	Clean, Dry Compressed Air – 120 psig max		
Mounting Positions	Unlimited		
Color	Gold/Bronze Anodize		



Linear Module LL 3000 Z

With Intermediate Stop



To meet your material handling needs, the linear module LL 3000 handling system offers you flexibility and compatibility with the entire range of Lanco handling system modules.

Three stroke ranges of 60 mm (2.36 in), 120 mm (4.72 in), and 180 mm (7.09 in) are available. As with all Lanco handling system components, a standard 60 mm (2.36 in) mounting bolt pattern is used in conjunction with Lanco's unique locating ring so that modules may be mixed and matched to meet the needs of your particular application.

Further, the LL 3000 may be ordered with the pneumatically actuated intermediate stop option to provide an additional back position.

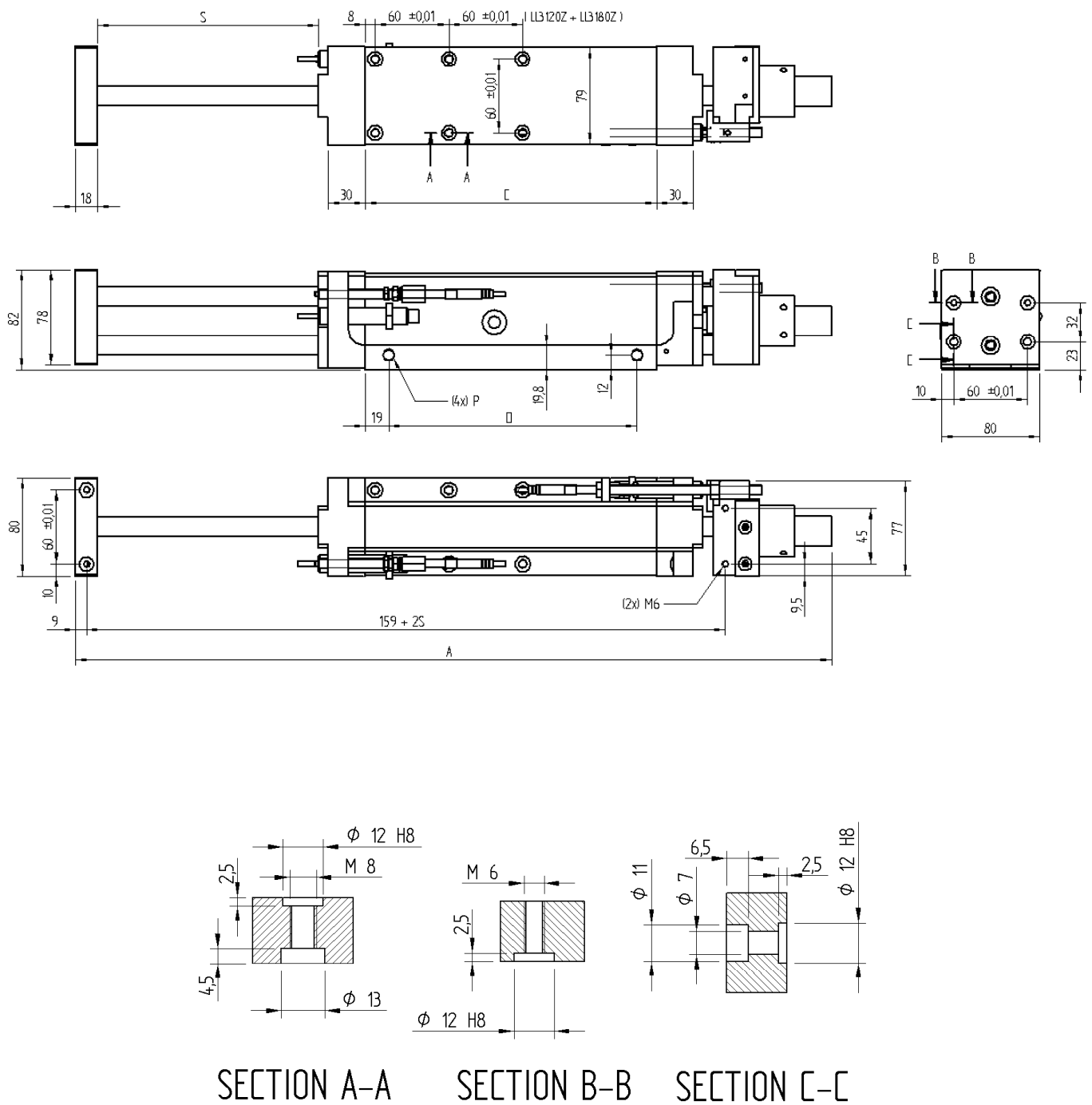
Sealed linear ball bearings and hard ground shafts assure you smooth, frictionless motion. Precision CNC machined parts manufactured to exacting tolerances insure highly repeatable action year after year.

Standard hydraulic shock absorbers effectively cushion the end-of-stroke impact so that wear and tear is minimized.

Lanco also makes set-up a snap by providing stop bolts with integral proximity switches: adjusting the stop position automatically repositions the switch.

Handling System			
Model	LL 3060 Z	LL 3120 Z	LL 3180 Z
Art.-No.	31-0014	31-0015	31-0016
Stroke (S)	60 mm (2.36 in.)	120 mm (4.72 in.)	180 mm (7.09 in.)
Stroke Adjustment	0 ... 60 mm (0 – 2.36 in.)	40 ... 120 mm (1.58 – 4.72 in.)	100 ... 180 mm (3.94 – 7.09 in.)
Weight	4.3 kg (9.48 lb)	5.1 kg (11.2 lb)	6.0 kg (13.2 lb)
Maximum Speed	800 mm/s (32 in/sec)		
Maximum Load	10 kg (22 lbs)		
Force @ 6 bar (90 psig)	350 N (80 lbf)		
Repeatability	± 0.01 mm (.0004 in.)		
Ports (P)	1/8" NPT		
Operating Medium	Clean, Dry Compressed Air – 120 psig max		
Mounting Positions	Unlimited		
Color	Gold/Bronze Anodize		

Dimensions



SECTION A-A

SECTION B-B

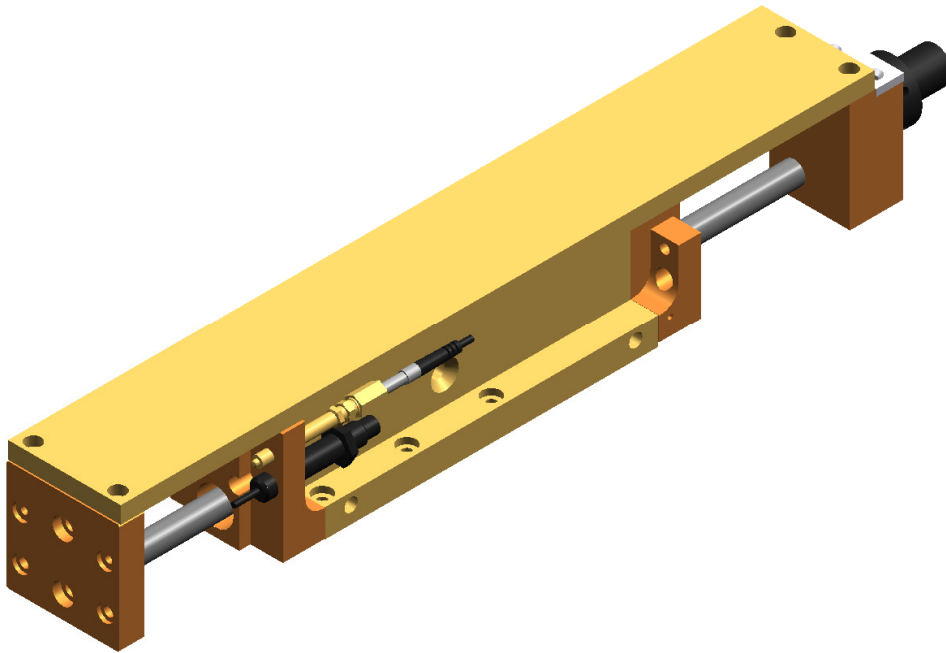
SECTION C-C

	LL 3060 Z	LL 3120 Z	LL 3180 Z
Dimension A	375	495	615
Dimension C	117	177	237
Dimension D	82	142	202
Number of Locating Holes	4	6	6



Linear Module LL 3000 AZ

With Intermediate Stop and Mounting Plate



To meet your material handling needs, the linear module LL 3000 handling system offers you flexibility and compatibility with the entire range of Lanco handling system modules.

Three stroke ranges of 60 mm (2.36 in), 120 mm (4.72 in), and 180 mm (7.09 in) are available. As with all Lanco handling system components, a standard 60 mm (2.36 in) mounting bolt pattern is used in conjunction with Lanco's unique locating ring so that modules may be mixed and matched to meet the needs of your particular application.

Further, the LL 3000 may be ordered with a pneumatically actuated intermediate stop option to provide an additional back position.

By adding the mounting plate option, system stiffness is enhanced while broadening mounting alternatives.

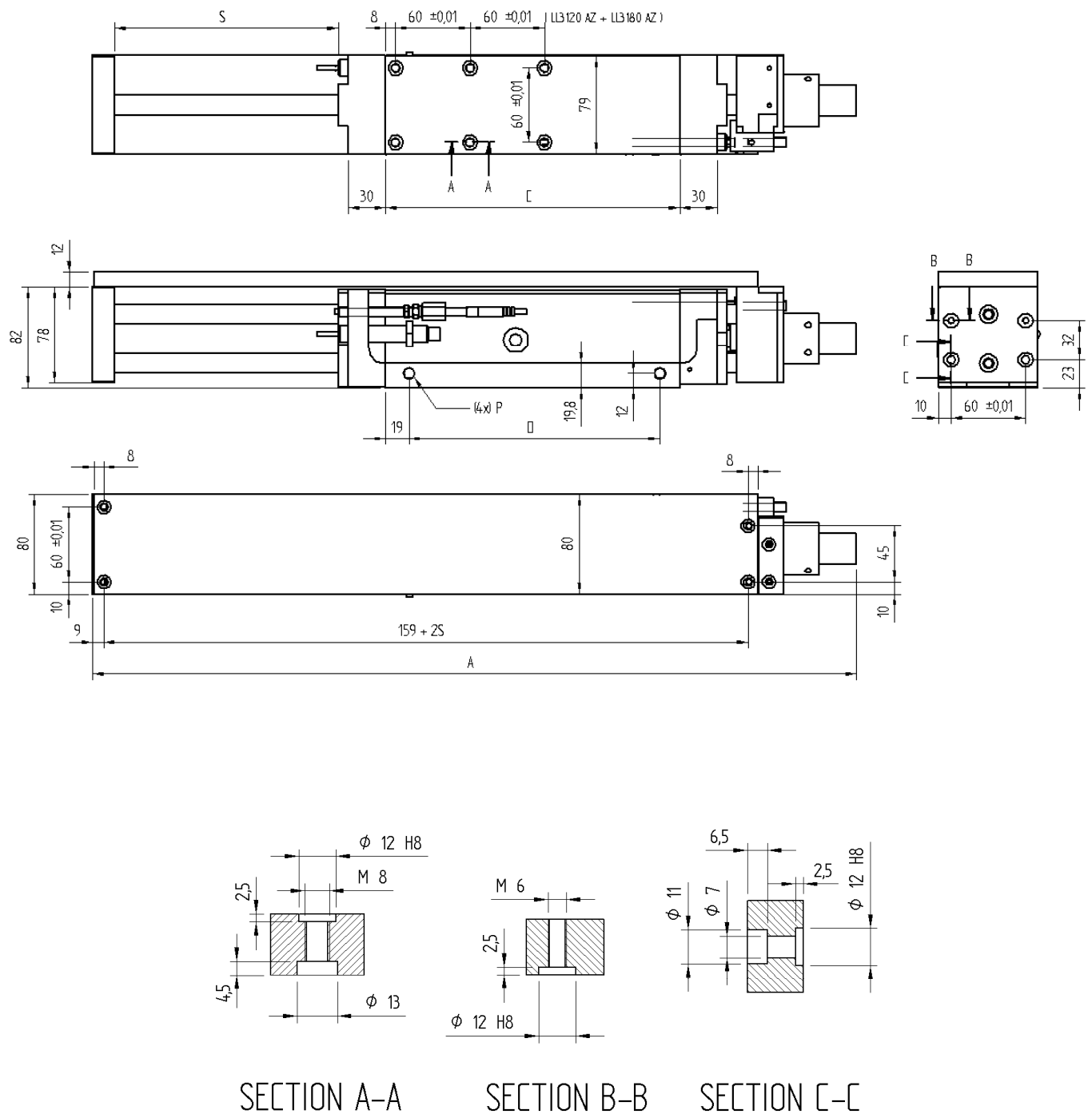
Sealed linear ball bearings and hard ground shafts assure you smooth, frictionless motion. Precision CNC machined parts manufactured to exacting tolerances insure highly repeatable action year after year.

Standard hydraulic shock absorbers effectively cushion the end-of-stroke impact so that wear and tear is minimized.

Lanco also makes set-up a snap by providing stop bolts with integral proximity switches: adjusting the stop position automatically repositions the switch.

Handling System			
Model	LL 3060 AZ	LL 3120 AZ	LL 3180 AZ
Art.-No.	31-0018	31-0019	31-0020
Stroke (S)	60 mm (2.36 in.)	120 mm (4.72 in.)	180 mm (7.09 in.)
Stroke Adjustment	0 ... 60 mm (0 – 2.36 in.)	40 ... 120 mm (1.57 – 4.72 in.)	100 ... 180 mm (3.94 – 7.09 in.)
Weight	5.35 kg (11.8 lb)	6.15 kg (13.6 lb)	7.35 kg (16.2 lb)
Maximum Speed	800 mm/s (32 in/sec)		
Maximum Load	10 kg (22 lbs)		
Force @ 6 bar (90 psig)	350 N (80 lbf)		
Repeatability	± 0.01 mm (.0004 in.)		
Ports (P)	1/8" NPT		
Operating Medium	Clean, Dry Compressed Air – 120 psig max		
Mounting Positions	Unlimited		
Color	Gold/Bronze Anodize		

Dimensions



SECTION A-A

SECTION B-B

SECTION C-C

	LL 3060 AZ	LL 3120 AZ	LL 3180 AZ
Dimension A	375	495	615
Dimension C	117	177	237
Dimension D	82	142	202
Number of Locating Holes	4	6	6